



- WET
optional
- DRY
- 5 AX
- 3 mm
12x
-
-
-
-
- ION

PMMA	WAX	Standard	PreMilled Abutment	Dentures	Crown, Bridge	Inlay, Onlay Veneers	Hybrid Abutment	Splint
Zr	COMPOSITE							
PEEK	SINT	C-Clamp	Block	zero-point clamping system	Full Denture	Model	Drilling template	Model casting
Glass ceramics	PreFab Abutments							
CoCr	Ti				Bridge	Telescopic technology	Abutment	Hybrid machining

CORiTEC 250i/250i dry

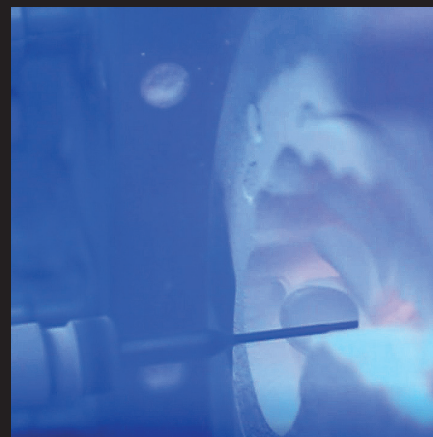
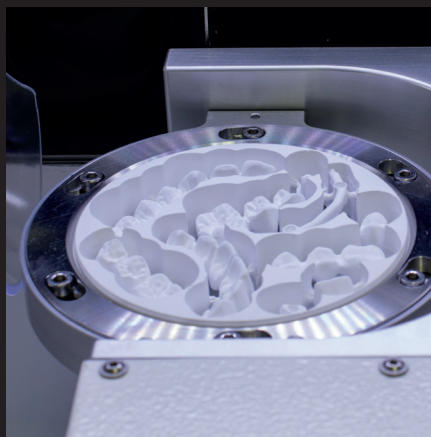
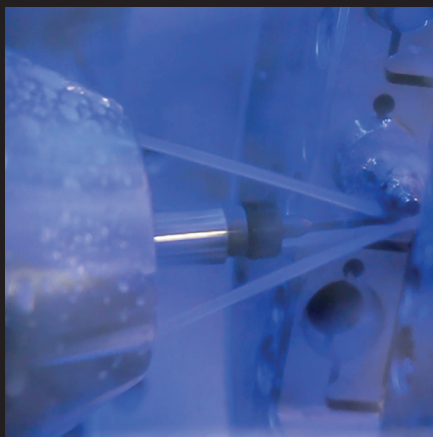
THE PROVEN 5-AXIS SYSTEM

The CORiTEC 250i and CORiTEC 250i dry machine systems are the most frequently used CAD/CAM systems in the field of zirconium dioxide, PMMA, Wax or glass ceramics. Thanks to the 5-axis simultaneous technology, these machines can also produce complex dental prostheses with diverging stumps and undercuts in the highest quality without reworking.

HIGHLIGHTS

- 5-axis machining systems with up to $\pm 30^\circ$ axis orientation
- tool runtime control/breakage control
- integrated cooling circuit for cooling lubricant
- compressed air and coolant level monitoring
- Metalworking for PreFab Abutments
- machining of zirconium, PMMA, wax, plastics, grindable board materials
- also available as **DRY** version
- 60.000 U/min spindle and double torque
- high precision due to integrated temperature compensation

Further details can be found in our product brochure.




Guadalajara (Matriz)
Industria del Plástico 2113
Fracc. Industrial Zapopan, Norte
Zapopan, Jalisco, México.
mde@dental.com.mx
+52 (33) 3833-0333

CDMX
Alzate 118, Eje 1 Norte
Col. Santa María de la Rivera
Delegación Cuauhtémoc
mdcmex@dental.com.mx
+52 (55) 5547-4747

Estados Unidos
17800 S. Main St. 201
Gardena CA, USA 90248
customerservice@mdcdental.com
011 (310) 352 6980

   /mdcdentaloficial

 www.dental.com.mx

 01 (800) 3637-800